

# Laying Panels

## Step 1

Align the first panel (after taking into account the setting out of the roof) and secure by nailing or screwing Snaplock® panel fixing clips at nominal 300mm centres.



Ensure that the panel is correctly positioned at the eaves and ridge points.

Secure the verge side of the panel by nailing or screwing flashing clips at nominal 300mm centres.



## Step 2

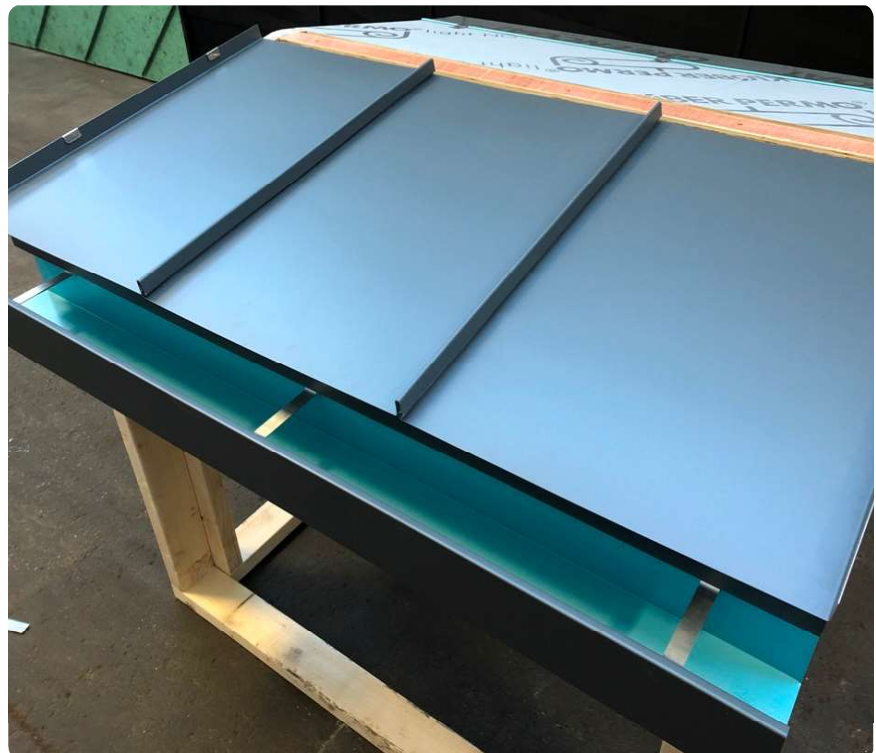
Place the next panel seam over the upstand of the first.

## Step 3

Align the panel along its length.

## Step 4

Press down the seam with hand or foot until the panel snaps into place.

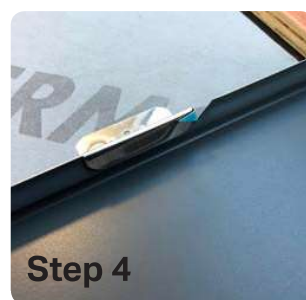
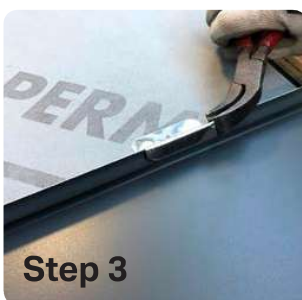
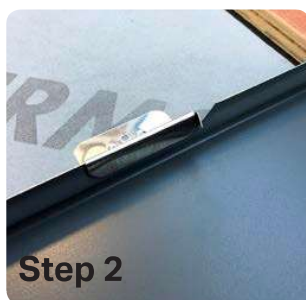


## Fixed Clips

Depending on the roof pitch, fixed clip points are designated as per the table on page 6.

Fixed clips can be created by one of the three options below;

### Cut & Fold



### Crimped



### Riveted





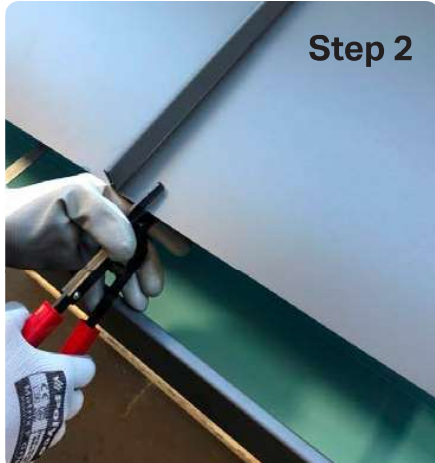
## Eaves Detail

### Step 1

Mark the folding line across the panel  
(This should be 5mm past the edge of the eaves flashing).



### Step 2

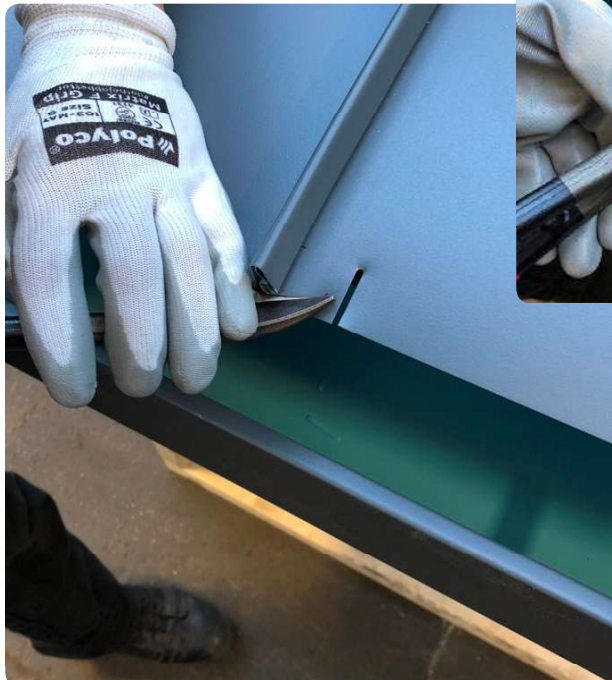


### Step 3

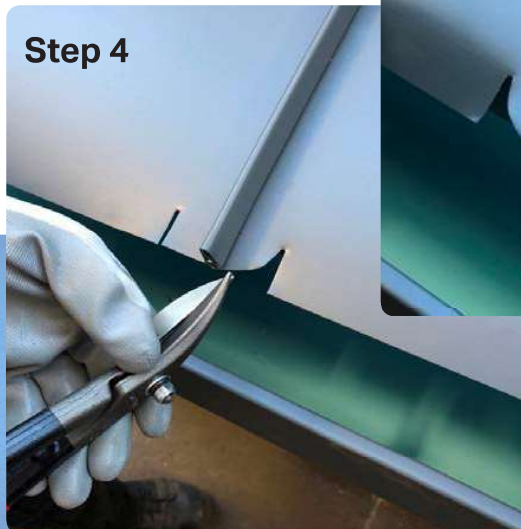


### Step 2 & 3

Using the Notching Tool,  
make a notch to the line.



### Step 4



### Step 4

Using Left or Right Handed Snips as appropriate,  
cut a curved line from the seam end to the notch point.

## Eaves Fold Detail

### Step 5

Make the first fold to minimum 100 degrees along the eaves, with the Seaming Pliers or the optional Eaves Folding Tool.

### Step 6

Make the second fold to close the eaves with the Eaves / Verge Closing Tool.



### Step 7

To complete the detail, fold the curved edges with the Small Curved Pliers.

